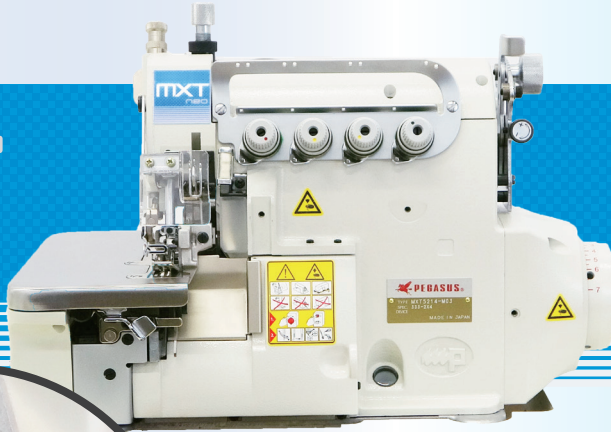


MXT neo

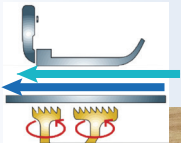


MXT series MXT3200
Variable top feed, safety stitch
MXT5200
Variable top feed overedgers

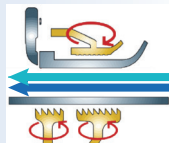
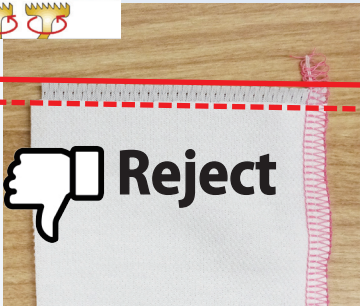


MXT series equipped with variable upper and lower feed dogs for effective fabric transportation

CASE 1 Ply shifting



 **Reject**

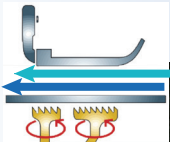


 **Good**

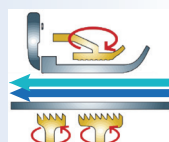
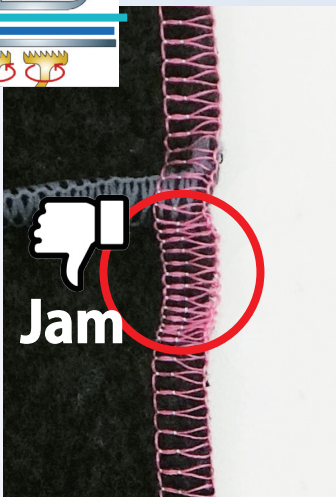


In case of sewing slippery fabrics together, misalignment occurs when the bottom fabric advances first and the top fabric lags behind.

CASE 2 Seam jamming



 **Jam**



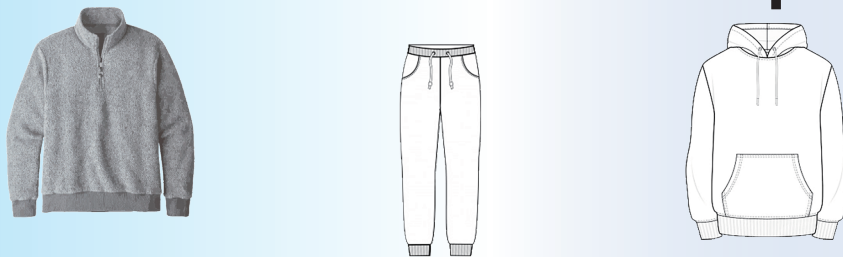
 **Good**



Effective for thick cross seams that frequently cause jamming



MXT! The solution for difficult fabric and operations!



Standard equipment



Vertical type vacuum thread chain cutter



Presser foot lift



Flat type vacuum thread chain cutter



Pneumatic lint collector



Seam	Application	Fabric weight	Subclass	No. of needles	No. of threads	Needle space (mm)	Overedge width (mm)	Max. stitch length (mm)	Diff. feed ratio	Presser foot lift (mm)	Max. speed (sti/min)	Needles	Accessories
①	Plain seaming	Medium to heavy	MXT3216-03/333	2	5	5	5	3.8	0.7-2	5.5	6,700	DCx27 #14(90)	KH/PL/LC
②	Plain seaming	Medium to heavy	MXT3244-03/333	3	6	3	2 + 4					5.0	
		Heavy to extra heavy	MXT3244-A04/435K	3	6	5	3 + 4	3.8	0.7-2	5.5	6,700	DCx27 #21(130)	
③	Plain seaming	Medium to heavy	MXT5214-M03/333	2	4	2	4	3.8	0.7-2	5.5	6,700	DCx27 #9(65)	KS/PL/LC

PEGASUS SEWING MACHINE MFG.CO.,LTD.

5-7-2 Sagisu Fukushima-ku, Osaka 553-0002 Japan TEL : +81-6-6458-4739 FAX : +81-6-6454-8785

© 2021 PEGASUS SEWING MACHINE MFG. CO., LTD. Catalog No.103142 Produced October 2021.

